

# *Racine County Pony Club*



## *D1 Prep Guide*

2007 Standard

The Racine County Pony Club produced this rating preparation guide. It is not an OFFICIAL USPC PUBLICATION; no guarantee of accuracy is warranted; USPC Review Committees have not approved the materials.



## The United States Pony Clubs, Inc. STANDARDS OF PROFICIENCY FOR TRADITIONAL RATINGS

(Revised January 1, 2007)

The United States Pony Clubs has established Standards of Proficiency within the framework of the international Pony Club movement as the curriculum for a program of instruction and testing of its members.

**D Rating:** The D Ratings are an introduction to the fun and challenge of riding, establishing a foundation of safety habits and knowledge of the daily care of a pony and tack. The D-1 through D-3 Pony Club member learns to ride independently and with control, maintaining a reasonably secure position at the walk, trot and canter and over low fences. All D ratings are awarded at the club level.

**C-1 and C-2 Ratings:** The C-1 and C-2 is a Pony Club member learning to become an active horseman, to care independently for pony and tack and to understand the reasons for what he or she is doing. The C-1 and C-2 show development towards a secure, independent seat and increasing control and confidence in all phases of riding. The C-1 and C-2 ratings are awarded at the club level.

**The H-B, C-3, B, H/H-A and A Ratings** are facilitated on a national basis and require a greater depth of knowledge and proficiency than the earlier ratings. Successful candidates are competent, all-around horsemen, active and contributing members of USPC, who participate in a variety of Pony Club activities. They are also thoughtful leaders who set an example for all levels.

**The H-B Rating** covers Horse Management knowledge that demonstrates increasing knowledge and competence in the care and handling of horses.

Pony Club members may choose to follow one or all of three riding tracks. They are: Traditional Eventing, Show Jumping or Dressage.

**The C-3 Rating** reflects a basis of competence in riding and horse care that will make possible a lifetime of pleasure with horses. If the C-3 riding test is passed before the H-B, the member becomes a C+.

**The B Rating** is for the active horseman and Pony Club member who is interested in acquiring further knowledge and proficiency in riding. The B is able to ride experienced mounts with confidence and control. The B should be able to ride and care for another person's experienced mount, maintaining proper mental and physical condition without undoing any of the mount's education. The B understands and is able to explain the reasons for what he or she is doing and to contribute to the education of younger Pony Club members.

**The A Rating**, the highest rating, is divided into two parts: the H/H-A, which covers horse management, teaching and training and the A, which tests the riding phase. The HHA has the knowledge, experience and maturity to evaluate and care for a mount's needs efficiently and in a variety of circumstances, and to teach riding and horse care to others. The A is able to ride mounts at various levels of schooling with judgement, tact and effectiveness; to train young mounts; and to retrain spoiled mounts.

**NOTE:** In addition to its instructional programs, USPC offers a variety of activities at club, regional, inter-regional and national levels for team and individual participation. These activities include Eventing, Dressage, Foxhunting, Quiz, Mounted Games, Show Jumping, Tetrathlon, Polocrosse, and Vaulting. Achieving a rating does not necessarily qualify the Pony Club member for competition in any horse sport. Further study and preparation for a particular activity, including working as a team member, may be necessary.

### Dimensions of Fences D to A\* for Traditional Eventing

Rating	Height	Width at Top		Width at Base	
		CC	SJ	CC	SJ
D-2	18"	1'	1'	1'6"	1'6"
D-3	2'6"	2'6"	2'6"	4'3"	4'3"
C-1	2'9"	2'9"	2'9"	4'3"	4'3"
C-2	3'0"	3'3"	3'3"	4'7"	4'11"
C-3	3'3"	3'11"	3'9"	5'3"	5'7"
B	3'7"	4'7"	4'3"	6'7"	6'3"
A	3'9"	5'3"	4'9"	7'10"	6'11"

\*Based on USPC Eventing Rules and US Equestrian Eventing Rules. When a second height is required at any one level, use appropriate dimensions shown on the chart above.

### Dressage Specialty Levels:

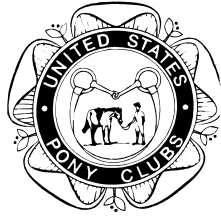
C-3 = First Level\*\*  
B = Second Level\*\*  
A = Third Level\*\*

### Dimensions of Fences for Show Jumping Specialty Levels:

Rating	Height up to	Width at Top up to	Triple Bar up to
C-3	3'6"	3'9"	4'3"
B	3'9"	4'3"	4'6"
A	4'3"	4'9"	5'3"

C-3= Level II-III\*\*      B=Level III-IV\*\*      A=Level V-VI\*\*

\*\*See USEF Level Descriptions



---

Name

### **I. Qualifications Sheet**

RCPC Rating Procedures requires each member to demonstrate competency in all requirements of the rating level prior to a rating. Each member will be provided with a flowsheet, and all USPC Standards of Proficiency must be demonstrated at proficiency level as stated for the rating level and signed off. The completed flowsheets must be presented to the Ratings Coordinator on or before deadline dates. Although opportunities will be made available at each mounted meeting, it is the member that should initiate/take responsibility to organize these sign-offs for themselves. Bring your flow sheets to lessons and mounted clinics with Pony Club qualified instructors on a regular basis, to give you an ongoing idea of how you are doing.

### **II. Horse Management Expectations**

This Prep outline is prepared to help you cover the Horse Management aspects of the D-1 Test. It is helpful for you to do this exercise because it not only gives you a great review format, it forces you to organize your thoughts and put them on paper. This reinforces the knowledge and helps you to verbalize your thoughts in the testing situation. Please practice verbalizing your answers. Show your guide to your instructors, DC, or anyone else with horse knowledge because they will add bits and pieces of their experience and aspects that you may not have considered.

### **III. Test your knowledge**

These questions are based on knowledge discussed in the required reading. Use this section to test your knowledge. See if you can answer these questions without the book after you have completed the first two sections of this Prep Guide. The page numbers of the answers are there to help you check your answers.

We hope that this guide helps you in your study.

**Best of Luck,**

**Debra Curley Arndt,  
District Commissioner**

**Mary Reimer,  
Jt. District Commissioner**

**Jennifer Berg,  
Ratings Coordinator**

# Racine County Pony Club



\_\_\_\_\_  
Name

## Qualifications Sheet – 2007 Standard D-1 Rating

### RIDING TEST EXPECTATIONS

Candidate should ride without lead line, demonstrating basic balanced position in an enclosed area at the halt and walk, and with control at the walk and trot.

### RIDING ON THE FLAT

Requirement	Requirement Learned or Demonstrated Instructor Comments and Suggestions	Date	Signature
Mount & dismount, with assistance if necessary.			
Hold reins correctly at the halt.			
Shorten & lengthen reins correctly at the halt.			
Demonstrate basic correct position at the halt <b>and</b> walk.			
Ride at the walk & trot, with control, keeping pony on rail.			
Demonstrate simple change of direction at the walk and trot.			
Perform gradual transitions from walk to trot & walk to halt.			
Rider should demonstrate basic balanced position at the halt and walk.	Instructor Comments on Overall Position:		

## RIDING OVER FENCES

Requirement	Requirement Learned or Demonstrated Instructor Comments and Suggestions	Date	Signature
Walk over poles on the ground in jumping position.			
Discuss with evaluator the reason for different positions when riding on the flat & over fences.			
Rider should ride over poles at the walk and trot demonstrating basic balanced position.			

## HORSE MANAGEMENT EXPECTATIONS

The candidate is a beginning-level horse manager, willing to learn the simple routines necessary for safe handling of quiet, well-trained horses. Knowledge will vary widely depending on age, educational level, and experience.

## TURN-OUT

Requirement	Requirement Learned or Demonstrated Instructor Comments and Suggestions	Date	Signature
<p>Rider in safe &amp; neat attire.</p> <p>Wear your Pony Club polo or any other shirt with a collar and sleeves.</p> <p>Wear riding breeches or jodhpurs, no chaps. If wearing jodhpurs, be sure to have knee garters or elastic under shoes. If you are wearing riding breeches, you should have high boots.</p> <p>Wear a properly fitted ASTM helmet.</p> <p>Wear appropriate boots – smooth sole with a heel.</p> <p>Wear your Pony Club Pin.</p> <p>For girls: Your hair should be neatly pulled back in a hair net (no show bows), or braided.</p> <p>No extra jewelry. One pair of stud earrings is OK.</p>			

Pony neatly brushed.			
Feet picked out (with assistance) & showing Farrier care.			
Tack safe & neat (properly adjusted with assistance if necessary).			

### CONDITIONING

Requirement	Requirement Learned or Demonstrated Instructor Comments and Suggestions	Date	Signature
Know one reason for cooling out mount after exercise.			

### NUTRITION

Requirement	Requirement Learned or Demonstrated Instructor Comments and Suggestions	Date	Signature
Know how to give water to pony safely.			
Know how to give grain to pony safely.			
Know how to give hay to pony safely.			
Know how to give a tidbit to pony safely.			

### STABLE MANAGEMENT

Requirement	Requirement Learned or Demonstrated Instructor Comments and Suggestions	Date	Signature
Groom pony with brush & currycomb.			
Pick out feet, with assistance.			
Tack up pony, with assistance.			
Untack pony, with assistance.			
Name 10 parts of saddle & bridle (any).			
Know two reasons for cleaning			

tack.			
-------	--	--	--

### pony parts, conformation & lameness

Requirement	Requirement Learned or Demonstrated Instructor Comments and Suggestions	Date	Signature
Name any 10 parts of the pony (such as mane, tail, leg, etc.)			

### TRAVEL SAFETY

Requirement	Requirement Learned or Demonstrated Instructor Comments and Suggestions	Date	Signature
Know basic rules of safe riding in a group, in an enclosed area.			

### RECORD BOOK

Requirement	Requirement Learned or Demonstrated Instructor Comments and Suggestions	Date	Signature
Not applicable.			

### HEALTH CARE VETERINARIAN

Requirement	Requirement Learned or Demonstrated Instructor Comments and Suggestions	Date	Signature
Discuss what a veterinarian is.			
Give one reason why the veterinarian might treat your pony.			

### TEACHING

Requirement	Requirement Learned or Demonstrated Instructor Comments and Suggestions	Date	Signature
Not applicable.			

### LAND CONSERVATION

Requirement	Requirement Learned or Demonstrated Instructor Comments and Suggestions	Date	Signature
Verbally list three different places in your area where you see horse activities taking place. Include where you have your Pony Club mounted meetings.			

### LEADING & LONGEING

Requirement	Requirement Learned or Demonstrated Instructor Comments and Suggestions	Date	Signature
Approach pony safely			
Put on halter.			
Lead & turn correctly & safely.			

### FOOT & SHOING

Requirement	Requirement Learned or Demonstrated Instructor Comments and Suggestions	Date	Signature
Give one reason to pick out feet.			

### BANDAGING

Requirement	Requirement Learned or Demonstrated Instructor Comments and Suggestions	Date	Signature
Not applicable.			

## **HORSE MANAGEMENT EXPECTATIONS**

The candidate is a beginning-level horse manager, willing to learn the simple routine necessary for safe handling of quiet, well-trained horses. His or her knowledge will vary widely depending on age, educational level, and experience.

### **TURN OUT**

List the requirements of safe riding attire.

Shirt?

Pants?

Helmet?

Boots?

Jewelry?

Hair?

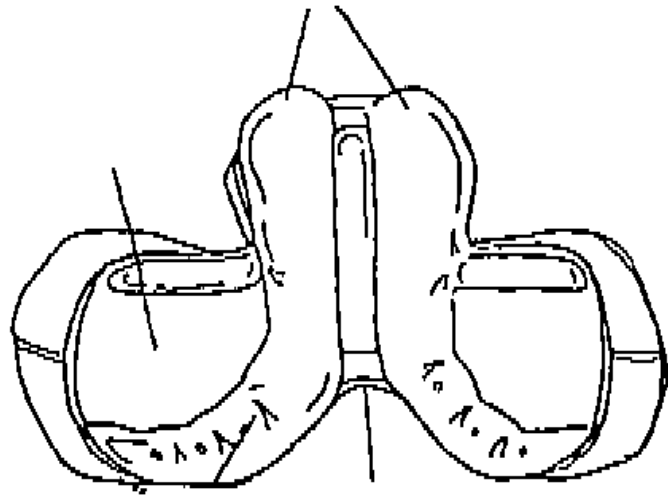
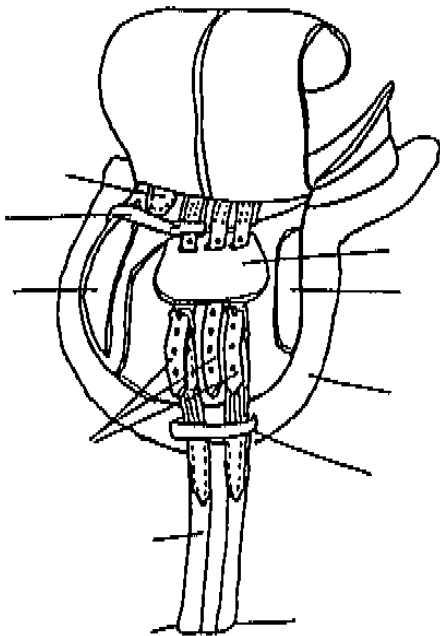
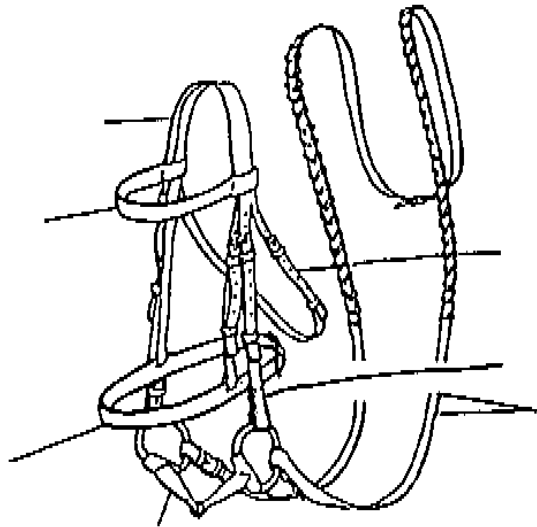
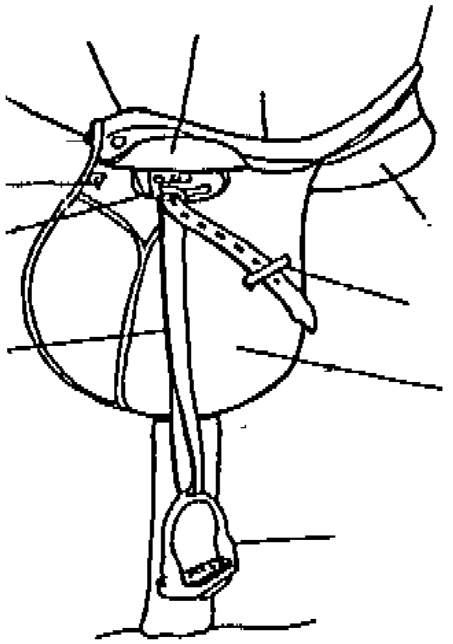
Describe your tack cleaning procedures.

Know two reasons for cleaning tack

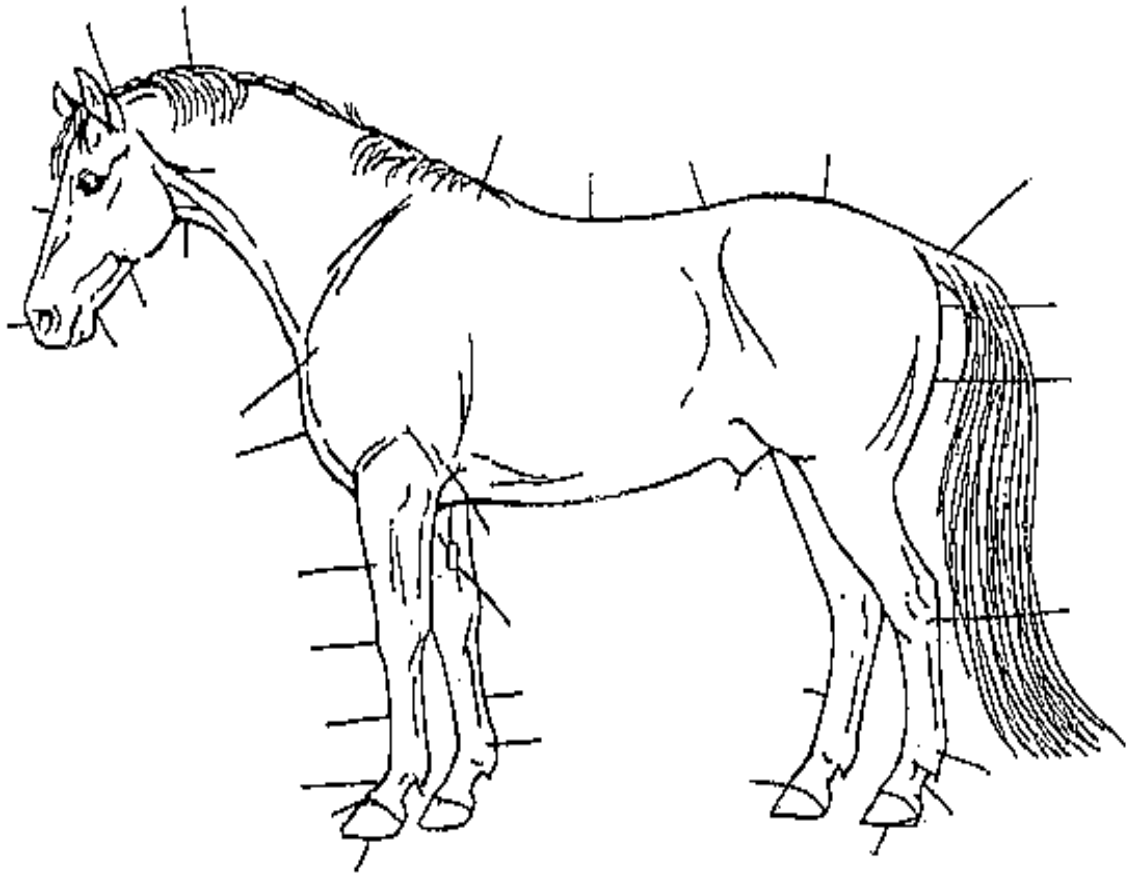
a.

b.

Label the parts of the Saddle and Bridle:



Label at least 10 Parts of the Pony:



List some Do & DON'T notes for yourself on the following demonstration areas:

Groom with brush and currycomb.

Pick out feet (with assistance if necessary).

Give one reason to pick out feet.

Tack up and untack pony (with assistance if necessary).  
Describe each step you do to tack up your horse.

Describe each step you do to do untack your horse.

## **LEADING/CONDITIONING/ NUTRITION**

Describe how to Approach pony safely and put on halter.

Describe how to Lead & turn correctly and safely.

What side of the pony should you be on?

Where should your hands be?

How should you hold the lead rope?

How do you turn your pony?

Write down one reason for cooling out pony after exercise.

Explain how to give water, grain, hay & tidbit to pony safely.

Water:

Grain:

Hay:

Tidbit:

## **HEALTH CARE / VETERINARIAN**

Describe who a veterinarian is.

Give one reason why the vet might treat your pony.

## **ROAD AND TRAVEL SAFETY**

Know basic rules of safe riding in a group, in an enclosed area.

## **LAND CONSERVATION**

List three different places in your area where you see horse activities taking place. Include where you have your Pony Club mounted meetings.

1.

2.

3.

# D1 Worksheet #1

(Turn Out)

DIRECTIONS: Look up the answers in the manual & circle the best answer.

Reference: (a) USPC Manual of Horsemanship D Level, (b) and Rules for Rallies & Horse management Handbook, (c)USPC Standards of Proficiency - D Standard.

1. It is important to cool your pony out after exercise because if you don't he might not like you **or** might get sick. (a) p.163
2. When riding, you should always wear your Pony Club sweatshirt **or** hard hat and boots. (a) p.23
3. At turn out inspection you should stand on the near side, facing the pony's shoulder **or** rear. (a) p.25
4. At turn out inspection you should hold your reins in the right **or** left hand, with the slack in your right **or** left hand. (b) p.28
5. When presenting a pony for inspection you do **or** do not change sides with the examiner. (c)
6. A riding coat (other than solid black), plain color shirt, choker, necktie or turtleneck, breeches (or jodhpurs of any color) and appropriate boots describe formal **or** informal attire. (b) p.24
7. For inspection you should have your girth tight **or** loose. (a) p.293
8. At 'D' Pony Club ratings, braiding is required **or** not allowed. (c)
9. Be sure your saddle pad is **or** is not pulled up into the front arch of your saddle. (a) p.148
10. To go to inspection, be sure your stirrups are **or** are not run up. (a) p.293

**“ A horse is worth more than riches”**

**Spanish proverb**

## D1 Worksheet #2

### (Mount & Dismount)

DIRECTIONS: Look up the answers in the manual & circle the best answer.  
Reference: USPC Manual of Horsemanship D Level

1. Before mounting be sure that the girth is secure **or** on, that the stirrups are down **or** up, and that the stirrup leathers are about the correct length **or** extra long. p.24
2. Mount from the near **or** off side facing the rear **or** head of the pony. p.24
3. Hold your whip and reins **or** spurs and martingale in the left hand in front of the croup **or** withers. p.25
4. Sink gently in to the saddle without a bump **or** stirrup. p.26
5. To dismount, remove both feet **or** the right foot from the stirrups. p.26
6. To dismount, put your left hand on the pony's croup **or** neck (in front of the withers). p.26
7. The extra loop of rein where the buckle is, is called the bight **or** crown. p.25
8. When mounting never put your hand on the back **or** front of the saddle. p.25
9. When dismounting, place both reins in your right **or** left hand. p.26
10. After dismounting leave your stirrups down and tighten the girth **or** run both stirrups up and loosen the girth, p.26

## D1 Worksheet #3

### (Basic Position)

DIRECTIONS: Look up the answers in the manual & circle the best answer.  
Reference: USPC Manual of Horsemanship D Level

1. Your stirrups should be on the instep **or** ball of your foot. p.28
2. Your heels should be up **or** down. p.28
3. Sit on your buttock **or** seat bones in the center of the saddle. p.28
4. Seen from the side there should be a straight line passing through the rider's shoulder, hip & heel **or** nose, hand & toe. p.30
5. The rider's head should be down **or** up and looking between the pony's legs **or** ears. p.30
6. There should be a straight line from the bit to the rider's nose **or** elbow. p.33
7. When holding the reins your thumbs **or** knuckles should be on top. p.31
8. When mounted your legs should lie firmly **or** gently against the pony's sides. p.28
9. Your reins should be long enough to place your hands on your pony's wither **or** croup with your elbows bent. p.33
10. A good riding position makes it easy for you to stay on your pony and is comfortable for your pony. I **or** E p.28

**“It takes courage to push yourself to places that you’ve never been before...to test your limits...to break through barriers.”**

## **D1 Worksheet #4**

### **(The Aids & Changes of Direction)**

DIRECTIONS: Look up the answers in the manual & circle the best answer.  
Reference: USPC Manual of Horsemanship D Level

1. To ride at the walk, your head **or** hands must move forward to follow the pony's head. p.35
2. When asking your pony to halt, your hand should stay squeezing **or** relax when he stops. p.36
3. Squeeze with one **or** both legs to move your pony forward. p.34
4. To make a turn keep your eyes looking between your pony's ears **or** look in the direction you want to go. p.36
5. When turning move your outside leg back a little to control his hindquarters **or** shoulders. p.36
6. When turning your inside **or** outside leg keeps the pony moving forward. p.36
7. The aids for trot are the same **or** different than for the walk. p.39
8. Your pony can **or** cannot feel your seat through the saddle. p.34
9. Your voice is used instead of **or** to help the other aids. p.34
10. When turning your inside **or** outside hand moves sideways to lead the pony through the turn. p.36

## D1 Worksheet # 5

### (Jump Position & Transitions)

DIRECTIONS: Look up the answers in the manual & circle the best answer.  
Reference: USPC Manual of Horsemanship D Level

1. Circle the appropriate times to use the half-seat: p.40  
riding down hills   riding up hills   posting trot   sitting trot  
jumping
2. Posting the trot is easier **or** harder on you and your pony. p.41
3. A transition is a change in direction **or** gait. p.42
4. Going from a walk to a trot is an example of an upward **or** downward transition. p.42
5. When asking your pony to halt you should relax **or** close your legs on the pony's sides. p.35
6. In the jump position the rider should always look ahead **or** down. p.45
7. When approaching a ground pole, keep your eyes focused at the center of the pole.   T **or** F p.45
8. It is easier **or** harder for your pony to pick his feet up properly when riding over a ground pole if you are in half-seat. p.46
9. When in the half-seat your knees, ankles and hips **or** knees, ankles and wrists take up the bounces. p.40
10. If you have trouble balancing hold the reins tighter.   T **or** F p.47

## **D1 Worksheet # 6**

**(Approach, Halter, Lead & Turn )**

DIRECTIONS: Look up the answers in the manual & circle the best answer.  
Reference: USPC Manual of Horsemanship D Level

1. You should always approach your pony at his head **or** shoulder. p.132
2. Ponies are blind behind his rump and right in front of his nose. I **or** E p.131
3. You should always talk **or** shout to your pony when approaching him. p.132
4. Never wrap the lead rope around your hand or body. I **or** E p.137
5. Always walk beside **or** in front of your pony when leading him. p.137
6. Always turn the pony toward **or** away from you when leading. p.138
7. To halter a pony stand by his left **or** right shoulder, facing his head **or** tail. p. 134
8. Put the lead line over your shoulder **or** around the pony's neck to keep him still. p.134
9. When putting a halter on slip the noseband **or** crownpiece onto his nose, then pass the noseband **or** crownpiece over his poll and buckle behind his ears. p.134
10. It is okay **or** not okay to lead your pony by the halter for just a short distance. p.135

**“Together everyone achieves more.”**

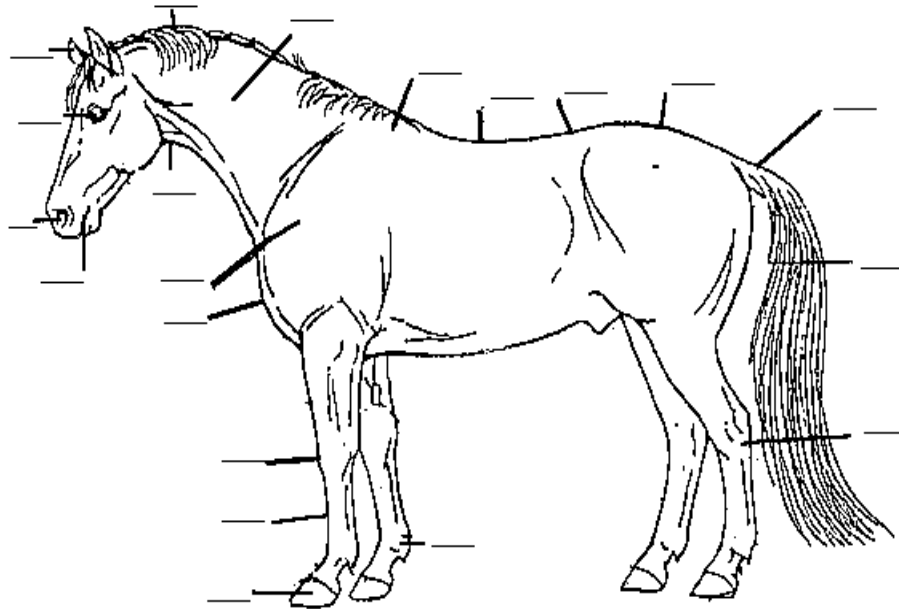
## D1 Worksheet #7

(Points of the Horse )

DIRECTIONS: Look up the answers in the manual & circle the best answer.  
Reference: USPC Manual of Horsemanship D Level

Place the letter of the body part in the correct place on the picture. A D1 needs to be able to verbally point out 10 parts of the pony.

- |           |             |            |            |
|-----------|-------------|------------|------------|
| a. wither | f. shoulder | k. nostril | p. fetlock |
| b. ear    | g. eye      | l. dock    | q. croup   |
| c. mouth  | h. knee     | m. loin    | r. tail    |
| d. back   | i. hoof     | n. neck    | s. mane    |
| e. throat | j. hock     | o. cannon  | t. chest   |



**“There is no secret so close as that between a rider & his horse”**

Robert Smith Surtees

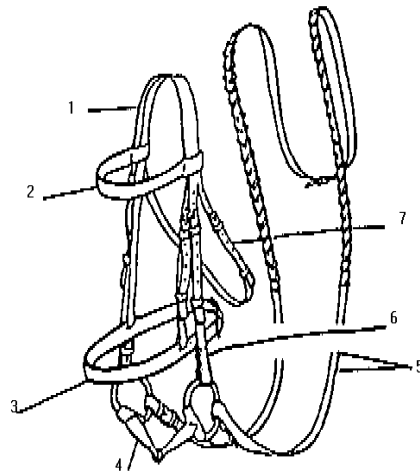
# D1 Worksheet # 8

## (Parts of the Saddle & Bridle )

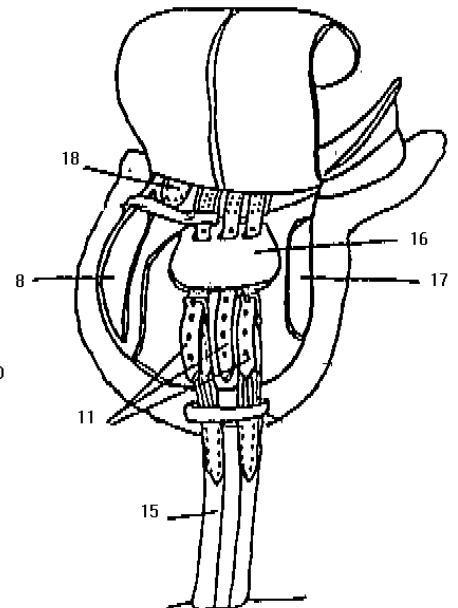
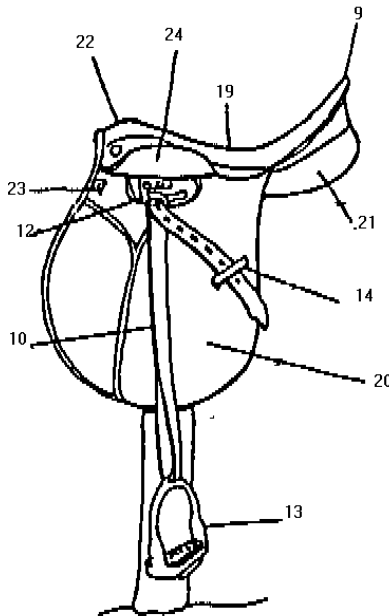
DIRECTIONS: Look up the answers in the manual & circle the best answer.  
Reference: USPC Manual of Horsemanship D Level (page 248-249)

Match the name of at least 10 parts of the saddle & bridle by placing the number in front of the name:

- \_\_\_\_\_ crownpiece
- \_\_\_\_\_ browband
- \_\_\_\_\_ noseband
- \_\_\_\_\_ bit
- \_\_\_\_\_ cheekpiece
- \_\_\_\_\_ throatlatch
- \_\_\_\_\_ reins



- \_\_\_\_\_ cantle
- \_\_\_\_\_ seat
- \_\_\_\_\_ pommel
- \_\_\_\_\_ skirt
- \_\_\_\_\_ D ring
- \_\_\_\_\_ stirrup bar
- \_\_\_\_\_ stirrup leather
- \_\_\_\_\_ stirrup iron
- \_\_\_\_\_ keeper
- \_\_\_\_\_ saddle flap
- \_\_\_\_\_ rear panel
- \_\_\_\_\_ buckle guard
- \_\_\_\_\_ point pocket
- \_\_\_\_\_ knee roll
- \_\_\_\_\_ billets
- \_\_\_\_\_ girth



## **D1 Worksheet #9**

**(Grooming, tacking up & picking out the feet )**

DIRECTIONS: Look up the answers in the manual & circle the best answer.  
Reference: USPC Manual of Horsemanship D Level

1. Circle 4 things you should have in your grooming kit: p.169  
  
hoof pick   ice pick   currycomb   twinkies   fly wipe   hoof oil  
  
sponge   dandy brush   gum   body brush   hairspray   mane  
comb
  
2. When grooming your pony start at the tail **or** poll. p.171
  
3. The steel curry comb is used to clean the pony **or** the brushes. p.169
  
4. When picking out the feet always use the pick from heel to toe **or** toe to heel. p.170
  
5. Use the same **or** a different sponge to clean the dock after cleaning around the eyes, lips and muzzle. p.173
  
6. Never use the curry comb on the face **or** shoulder. p.171
  
7. As a D1 you can **or** cannot have help to tack and untack a pony. p.156
  
8. A pony should always **or** never be tied by his bridle p.148
  
9. When tacking your pony the first thing to put on him is the saddle **or** bridle. p.148
  
10. Before you put the bridle on make sure the noseband and throatlatch are buckled **or** unbuckled. p.152

**“A Canter is cure for every evil” Benjamin Disraeli**

## D1 Worksheet # 10

### (Feeding & Tack Cleaning)

DIRECTIONS: Look up the answers in the manual & circle the best answer.  
Reference: USPC Manual of Horsemanship D Level

1. Circle the materials needed to clean your tack. p.256  
  
saddle soap    nail    sponge    dandy brush    hoof pick  
metal polish    curry comb    feather duster    hook    water  
bucket    book    hair spray    saddle rack    clean rags  
conditioner    telephone
2. Use a dandy brush **or** sponge to clean off dirt & grease. p.256
3. Dirt, sweat and dust make leather rough and dry **or** moist and slippery. p.253
4. When cleaning your tack keep the sponge as dry **or** wet as possible. p.258
5. If the soap lathers it is too dry **or** wet. p.258
6. Circle 3 reasons for cleaning your tack:  
prevents drying and cracking of leather p.253+255  
to make it look more expensive  
to check for damage  
makes it last for many years
7. Circle the places hay can be fed: p.189 -190  
feeder    manger    on clean sand    haynet    on clean dirt
8. Feed grain in a feeder **or** on the ground. p.191
9. Water should be available at all times **or** at certain times. p.187
10. Feed a tidbit with your hand in a fist **or** flat. p.187